

INSTALLATION INSTRUCTIONS

Masterfil[®] Fabric Filter

Armadillo[®] Portable Filter Machine

⚠ Always wear personal protective equipment when working around hot oil.

Secure lid on filter machine tank (when applicable). Place crumb basket in filter tank (when applicable).

STEP 4

Pull up on the black round bumper on quick connector and insert into riser tube nipple. Release the black round bumper to lock.

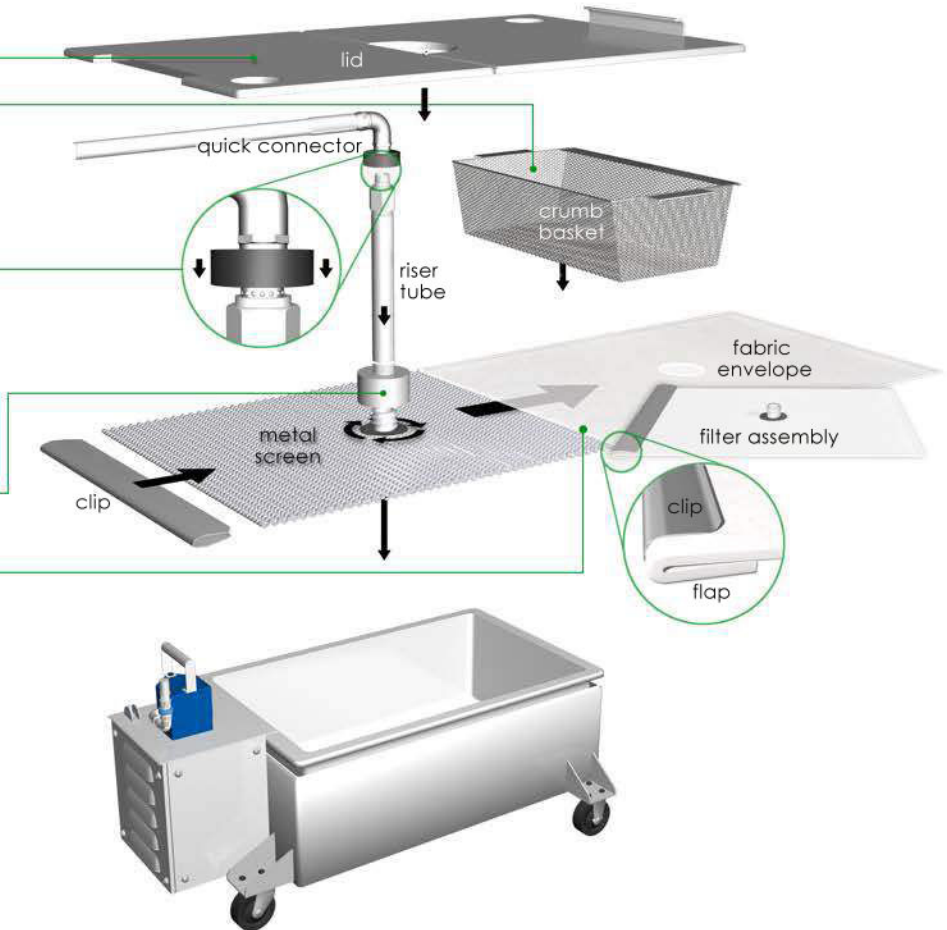
STEP 3

Screw on riser tube to filter assembly. Place in filter tank.

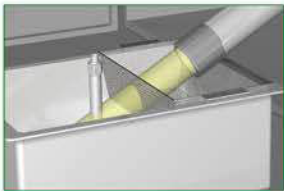
STEP 2

Insert metal screen into Masterfil[®] filter envelope. Fold the fabric flap toward bottom and secure with metal clip.

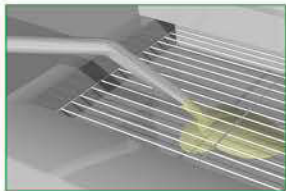
STEP 1



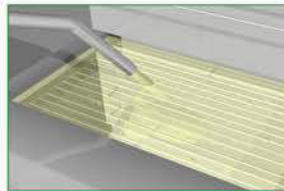
FILTRATION INSTRUCTIONS



- Turn fryer OFF
- Attach drain pipe
- Roll filter machine under drain pipe
- Slowly open drain valve



- With return wand positioned in fry pot
- Turn filter pump ON
- Wash debris from pot



- Close drain valve to fill pot until bubbles appear
- Turn filter pump OFF
- Turn fryer ON



- Detach suction hose from riser tube
- Scrape top and bottom of filter and toss debris



- Scoop out all debris
- Wipe down filter pan and dry thoroughly
- **FILTER LASTS 7 DAYS**
- **DO NOT GET FILTER WET**

ReOrder Filters

888.459.2112

OrderDesk@OilSolutionsGroup.com